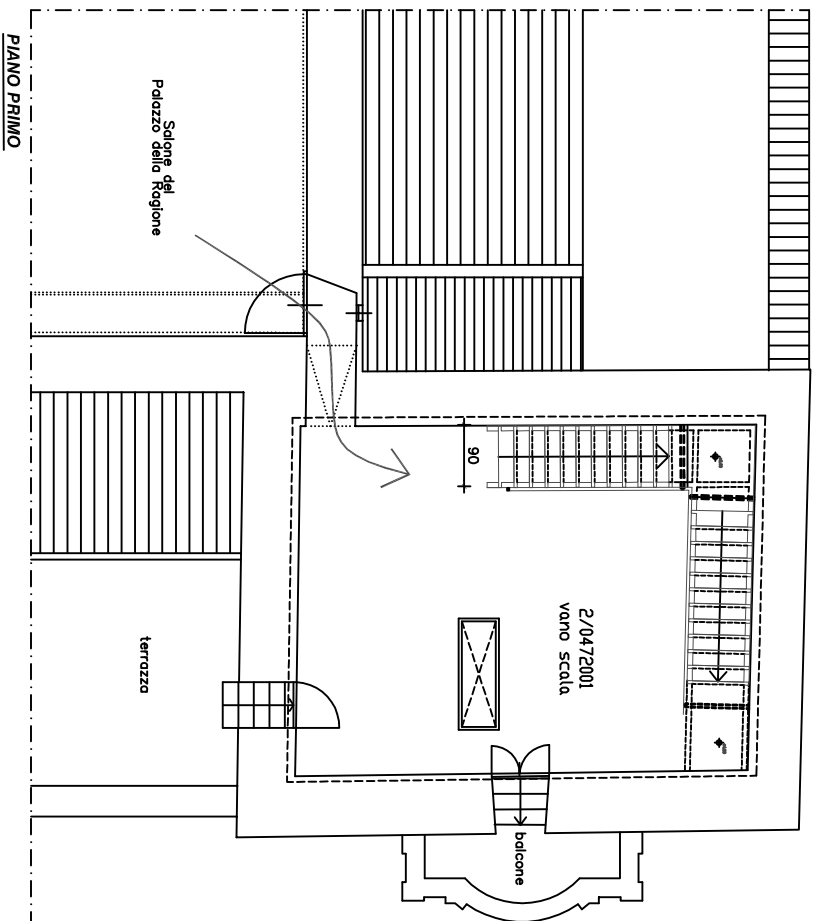


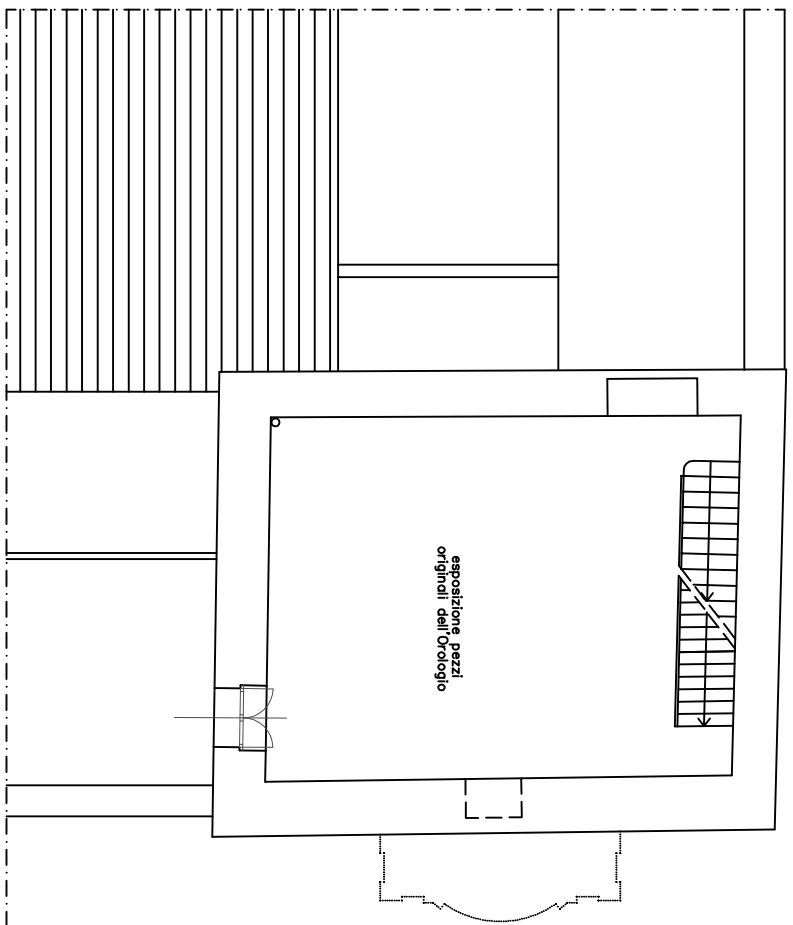
UNITA' IMMOBILIARE:0472001

Cod. Vande		stazione d'us		Sup. Paviment		Sup. Illumin		SP./S.IA		tezz&ermetr		Volume \$.		Intonaco	
2	vano	scala	416	0,00	===	4,78	25,90	196,74	158,32						
100	terrazza		482	0,00	===	0,00	12,66	0,00	3,06						
TOTALI			4598	0,00		38,56	196,74	161,38							



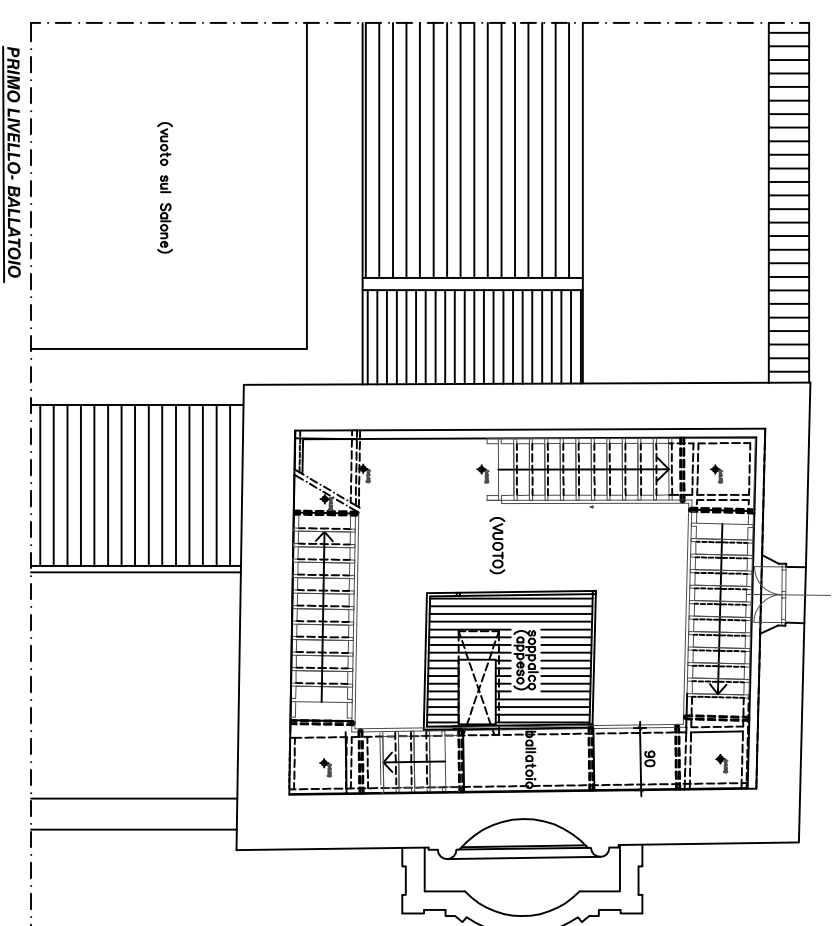
UNITA' IMMOBILIARE:0472001

Cod. Vande		stazione d'us		Sup. Paviment		Sup. Illumin		SP./S.IA		tezz&ermetr		Volume \$.		Intonaco	
5	rip		2994	0,67	44,95	2,93	21,94	87,72	91,96						
6	vano	scala	1421	0,00	===	2,93	17,50	41,64	63,89						
TOTALI			4415	0,67	39,43	129,37	155,85								



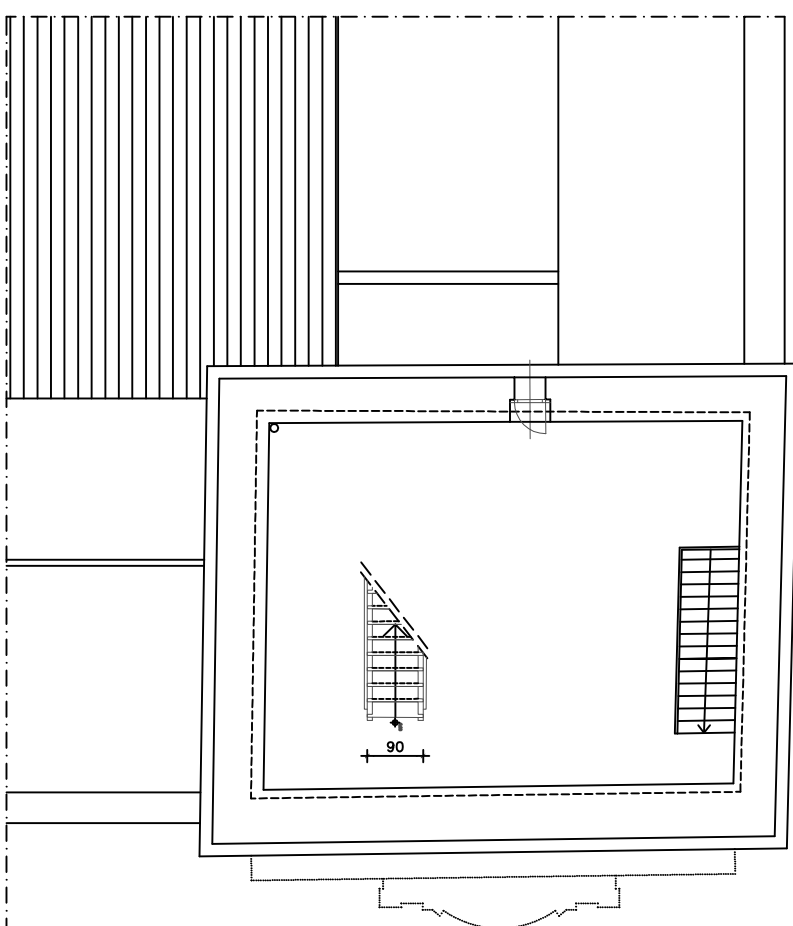
UNITA' IMMOBILIARE:0472001

Cod. Vande		stazione d'us		Sup. Paviment		Sup. Illumin		SP./S.IA		tezz&ermetr		Volume \$.		Intonaco	
4	vano	scala	4649	1,71	27,19	3,65	30,40	169,68	155,75						
TOTALI			4649	1,71	30,40	169,68	155,75								



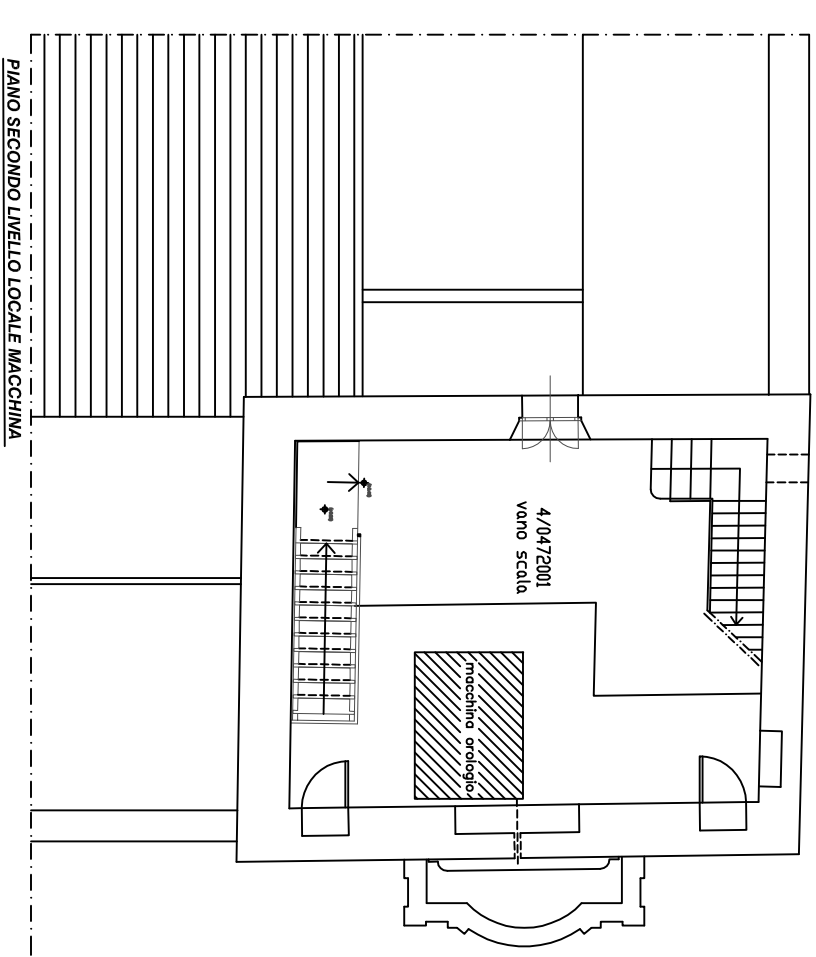
UNITA' IMMOBILIARE:0472001

Cod. Vande		stazione d'us		Sup. Paviment		Sup. Illumin		SP./S.IA		tezz&ermetr		Volume \$.		Intonaco	
7	sottotetto		4410	0,28	157,49	7,80	26,78	343,96	252,67						
TOTALI			4410	0,28	26,78	343,96	252,67								



UNITA' IMMOBILIARE:0472001

Cod. Vande		stazione d'us		Sup. Paviment		Sup. Illumin		SP./S.IA		tezz&ermetr		Volume \$.		Intonaco	
4	vano	scala	4649	1,71	27,19	3,65	30,40	169,68	155,75						
TOTALI			4649	1,71	30,40	169,68	155,75								



UNITA' IMMOBILIARE:0472001

Cod. Vande		stazione d'us		Sup. Paviment		Sup. Illumin		SP./S.IA		tezz&ermetr		Volume \$.		Intonaco	
7	sottotetto		4410	0,28	157,49	7,80	26,78	343,96	252,67						
TOTALI			4410	0,28	26,78	343,96	252,67								

